

# BOBi Diaphragm Gas Meters

## KEY FEATURES

- High Quality diaphragm gas meter
- Manufactured to ISOEN 359/OIMLR31
- Free calibration certificate with each meter
- For use with coal, natural, marsh gas, LPG and other non-corrosive gases
- All sizes standard with a pulsed output
- Pulsed outputs designed for long signal transmission
- Maximum working pressure 100 mbar



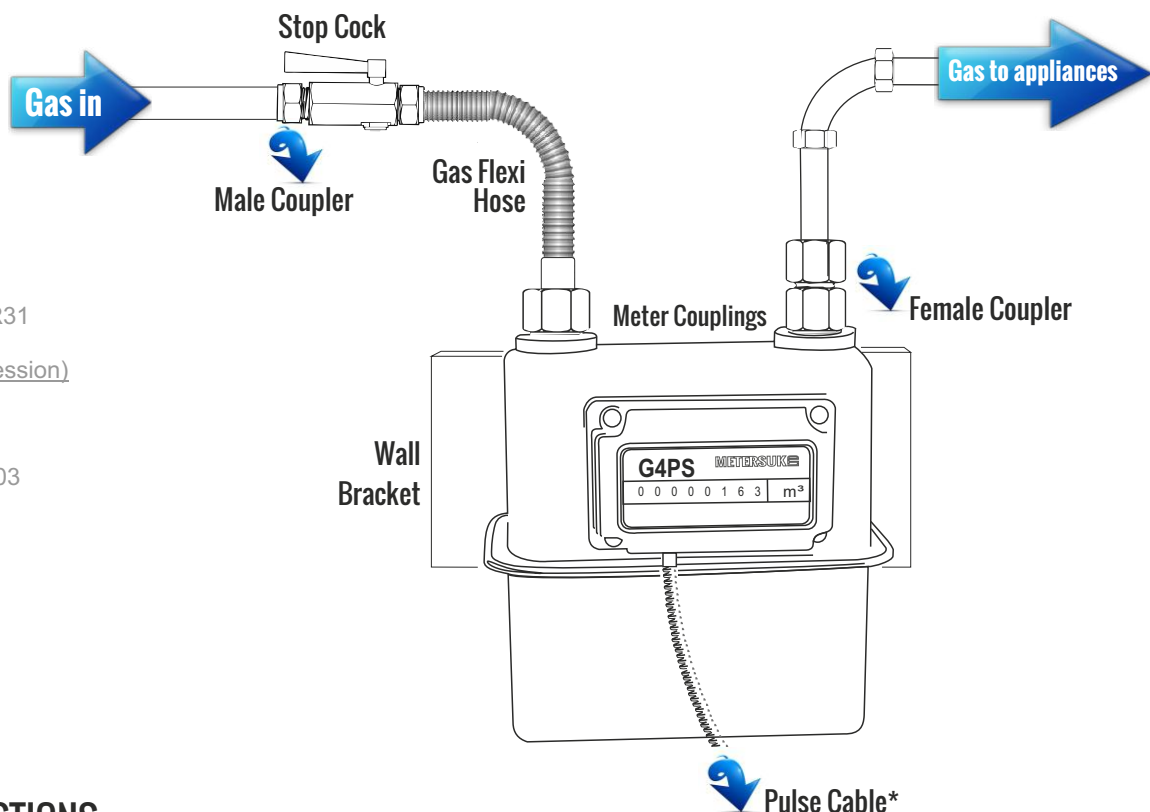
## METER SIZES G4 to G25

ITEM	UNIT	G4	G6	G10	G16	G25
Norminal Flow Rate	m <sup>3</sup> h	4	6	10	16	25
Qmax	m <sup>3</sup> h	6	10	16	25	40
Qmin	m <sup>3</sup> h	0.04	0.06	0.1	0.16	0.25
Qmax Operating Pressure	kPa	10	10	10	10	10
Permissable Error		B Grade Qmin , 0.1 Qmax +/- 3% 0.1 Qmax , Qmax +/- 1.5%				
Total Pressure Loss	PA	Qmax < 200			Qmax < 300	
Operating Ambient Temperature	C	~ 0 40				
Signal Output		ON - OFF Signal				
Signal Equivalence	m <sup>3</sup> h	0.1				
Signal Width	ms	> 360				
Opertaing Voltage	V	5 - 12v				
Permission Circuit	mA	< 10				
Specification of the Line Output		AVVR2 x 0.12				
Length of Wire	1000	1000			1500	
Size L*W*H	mm	210*165*233	275*210*295	280*205*325	340*245*380	480*340*565
Pipe Centres	mm	130	180	205	340	340
Net Weight including couplings	kg	2.5	4.5	4.5	6	8
Coupling*	mm	20mm	25mm	30mm	40mm	50mm
Pipe Size**	mm   bsp	21   3/4"	25   1"	30   1 1/4"	40   1 1/2"	50   2"
Coupling Thread	Type	11 dens/inch	11 dens/inch	11 dens/inch	11 dens/inch	11 dens/inch
Cover		Aluminium				
Order Code		GD4PS	GD6PS	GD10PS	GD16PS	GD25PS

\* Internal Diameters - Coupling is the nut fitting on top of the meter

\*\* Pipe size is the size of the pipe which is joined to the gas pipe

## BOBi METER INSTALLATION



BOBi Gas Meter

Manufactured to EN1359/OIMLR31

Male & Female Couplers (Compression)

Manufactured to EN1254-2

Gas Flexi Hose

Manufactured to EN103801 : 2003

Stop Cock

Manufactured to EN6676

Wall Mounting Bracket

G4 and G6 sizes only

## FREQUENTLY ASKED QUESTIONS

**Q: What application are the BOBi Gas meters best suited ?**

**A:** From standard domestic housing (G4) to small/medium commercial buildings (G25)

**Q: How do I know that the gas meters are of good quality ?**

**A:** Manufactured to ISO standards - ISOEN 1359/OIMLR31. Meters UK Ltd are an accredited ISO9001 manufacturer.

**Q: How accurate are the meters ?**

**A:** BOBi meters fall within the prescribed limits of +/- 2%. A **FREE** calibration certificate is issued upon request with each meter.

**Q: What is the pulsed output facility ?**

**A:** This reads the gas consumption and is also used in Building Management Applications.

**Q: I don't have a BMS and meters are not really accessible, what can you suggest ?**

**A:** We have a Remote Counter Unit which allows the reading of the meter to be done in another area, as per the modern building regulations act.

**Q: I don't need a pulsed output facility, do I need to have it ?**

**A:** A pulsed output comes standard with the meter. It does not have to be used.

**Q: What type of gas is the GDPS suitable for ?**

**A:** Natural/Coal/Marsh LPG and other non corrosive gases

**Q: If I want to reed-connect to the BMS via the pulsed output facility, are there any regulations ?**

**A:** Yes, in any potential explosive area, Gas safe regulations require a safety barrier be fitted and also provides a smooth signal to the BMS.